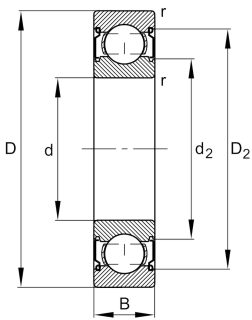


**FAG****6310-C-2Z-C4**

## Deep groove ball bearing

Deep groove ball bearing 63...-C-2Z, single row, Generation C, shields, steel sheet metal cage

## Technical information



## Your current product variant

Changed internal design	C	GenerationC
Type of Seal	2Z	Non-contact shield on both sides
Cage	JN	Steel sheet metal
Tolerance class	P6	Class6 (P6), better than PN
Dimensional / heat stabilization	S0	Rings dimensional stabilized up to 150°
Lubricant	GA13	Ball bearing and insert bearing grease
Radial internal clearance	C4 (Group 4)	Internal clearance larger than C3
Bore type	Z	Cylindrical

## Main Dimensions &amp; Performance Data

d	50 mm	Bore diameter
D	110 mm	Outside diameter
B	27 mm	Width
$C_r$	68.000 N	Basic dynamic load rating, radial
$C_{0r}$	38.000 N	Basic static load rating, radial
$C_{ur}$	2.650 N	Fatigue load limit, radial
$n_G$	8.000 1/min	Limiting speed
$n_{gr}$	8.400 1/min	Reference speed
$\approx m$	1,077 kg	Weight



### Mounting dimensions

$d_{a \min}$	61 mm	Minimum diameter shaft shoulder
$D_{a \max}$	99 mm	Maximum diameter of housing shoulder
$r_{a \max}$	2 mm	Maximum fillet radius

### Dimensions

$r_{\min}$	2 mm	Minimum chamfer dimension
$D_1$	92,1 mm	Shoulder diameter outer ring
$D_2$	95,22 mm	Caliber diameter outer ring
$d_1$	68,64 mm	Shoulder diameter inner ring
$d_2$	66,74 mm	Caliber diameter inner ring

### Temperature range

$T_{\min}$	-20 °C	Operating temperature min.
$T_{\max}$	120 °C	Operating temperature max.

### Calculation factors

$f_0$	13,1	Calculation factor
-------	------	--------------------

### Characteristics

	Radial load
	Axial load in one direction
	Axial load in two directions
	Lifetime lubrication, freedom from maintenance
	Grease Lubrication
	Sealed on both sides