

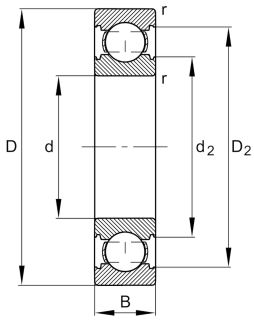
**FAG****6310-C-M-C4**

Deep groove ball bearing

Deep groove ball bearing 63.-C-M, single row, Generation C, solid brass cage



Technical information

**Your current product variant**

| | | |
|----------------------------------|--------------|--|
| Changed internal design | C | GenerationC |
| Sealing | Without | Not sealed |
| Cage | M | Solid brass cage, rolling element guided |
| Tolerance class | P6 | Class6 (P6), better then PN |
| Dimensional / heat stabilization | S0 | Rings dimensional stabilized up to 150° |
| Lubricant | Without | Bearing not greased |
| Radial internal clearance | C4 (Group 4) | Internal clearance larger than C3 |
| Bore type | Z | Cylindrical |

Main Dimensions & Performance Data

| | | |
|-----------------|--------------|-----------------------------------|
| d | 50 mm | Bore diameter |
| D | 110 mm | Outside diameter |
| B | 27 mm | Width |
| C _r | 68.000 N | Basic dynamic load rating, radial |
| C _{0r} | 38.000 N | Basic static load rating, radial |
| C _{ur} | 2.650 N | Fatigue load limit, radial |
| n _G | 12.300 1/min | Limiting speed |
| n _{gr} | 8.400 1/min | Reference speed |
| ≈m | 1,261 kg | Weight |



Mounting dimensions

| | | |
|--------------|-------|--------------------------------------|
| $d_{a \min}$ | 61 mm | Minimum diameter shaft shoulder |
| $D_{a \max}$ | 99 mm | Maximum diameter of housing shoulder |
| $r_{a \max}$ | 2 mm | Maximum fillet radius |

Dimensions

| | | |
|------------|----------|------------------------------|
| r_{\min} | 2 mm | Minimum chamfer dimension |
| D_1 | 92,1 mm | Shoulder diameter outer ring |
| D_2 | 95,22 mm | Caliber diameter outer ring |
| d_1 | 68,64 mm | Shoulder diameter inner ring |
| d_2 | 66,74 mm | Caliber diameter inner ring |

Temperature range

| | | |
|------------|--------|----------------------------|
| T_{\min} | -30 °C | Operating temperature min. |
| T_{\max} | 150 °C | Operating temperature max. |

Calculation factors

| | | |
|-------|------|--------------------|
| f_0 | 13,1 | Calculation factor |
|-------|------|--------------------|

Characteristics

| | |
|---|------------------------------|
|  | Radial load |
|  | Axial load in one direction |
|  | Axial load in two directions |
|  | Grease Lubrication |
|  | Oil Lubrication |
|  | Not sealed |