

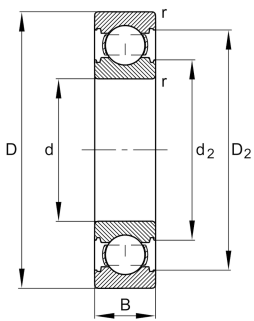
**FAG****6311-C-M-C3**

Deep groove ball bearing

Deep groove ball bearing 63...-C-M, single row, Generation C, solid brass cage



Technical information

**Your current product variant**

Changed internal design	C	GenerationC
Sealing	Without	Not sealed
Cage	M	Solid brass cage, rolling element guided
Tolerance class	P6	Class 6 (ISO 492:2023)
Dimensional / heat stabilization	S0	Rings dimensional stabilized up to 150°
Lubricant	Without	Bearing not greased
Radial internal clearance	C3 (Group 3)	Internal clearance larger than CN
Bore type	Z	Cylindrical

Main Dimensions & Performance Data

d	55 mm	Bore diameter
D	120 mm	Outside diameter
B	29 mm	Width
C _r	83.000 N	Basic dynamic load rating, radial
C _{0r}	47.500 N	Basic static load rating, radial
C _{ur}	3.300 N	Fatigue load limit, radial
n _G	11.000 1/min	Limiting speed
n _{gr}	7.800 1/min	Reference speed
≈m	1,6 kg	Weight



Mounting dimensions

$d_{a \min}$	66 mm	Minimum diameter shaft shoulder
$D_{a \max}$	109 mm	Maximum diameter of housing shoulder
$r_{a \max}$	2 mm	Maximum fillet radius

Dimensions

r_{\min}	2 mm	Minimum chamfer dimension
D_1	102,15 mm	Shoulder diameter outer ring
D_2	105,3 mm	Caliber diameter outer ring
d_1	74,7 mm	Shoulder diameter inner ring
d_2	72,54 mm	Caliber diameter inner ring

Temperature range

T_{\min}	-30 °C	Operating temperature min.
T_{\max}	150 °C	Operating temperature max.

Calculation factors

f_0	12,9	Calculation factor
-------	------	--------------------

Characteristics

	Radial load
	Axial load in one direction
	Axial load in two directions
	Grease Lubrication
	Oil Lubrication
	Not sealed