

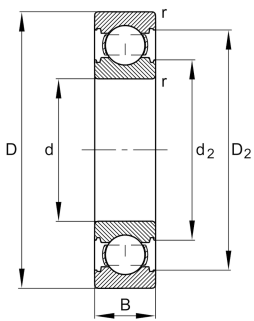
**FAG****6313-C-M-C3**

Deep groove ball bearing

Deep groove ball bearing 63.-C-M, single row, Generation C, solid brass cage



Technical information



Your current product variant

Changed internal design	C	GenerationC
Sealing	Without	Not sealed
Cage	M	Solid brass cage, rolling element guided
Tolerance class	P6	Class 6 (ISO 492:2023)
Dimensional / heat stabilization	S0	Rings dimensional stabilized up to 150°
Lubricant	Without	Bearing not greased
Radial internal clearance	C3 (Group 3)	Internal clearance larger than CN
Bore type	Z	Cylindrical

Main Dimensions & Performance Data

d	65 mm	Bore diameter
D	140 mm	Outside diameter
B	33 mm	Width
C _r	101.000 N	Basic dynamic load rating, radial
C _{0r}	60.000 N	Basic static load rating, radial
C _{ur}	4.100 N	Fatigue load limit, radial
n _G	9.500 1/min	Limiting speed
n _{gr}	7.000 1/min	Reference speed
≈m	2,41 kg	Weight



Mounting dimensions

$d_{a \min}$	77 mm	Minimum diameter shaft shoulder
$D_{a \max}$	128 mm	Maximum diameter of housing shoulder
$r_{a \max}$	2,1 mm	Maximum fillet radius

Dimensions

r_{\min}	2,1 mm	Minimum chamfer dimension
D_1	118,22 mm	Shoulder diameter outer ring
D_2	121,4 mm	Caliber diameter outer ring
d_1	87,73 mm	Shoulder diameter inner ring
d_2	85,59 mm	Caliber diameter inner ring

Temperature range

T_{\min}	-30 °C	Operating temperature min.
T_{\max}	150 °C	Operating temperature max.

Calculation factors

f_0	13,2	Calculation factor
-------	------	--------------------

Characteristics

	Radial load
	Axial load in one direction
	Axial load in two directions
	Grease Lubrication
	Oil Lubrication
	Not sealed