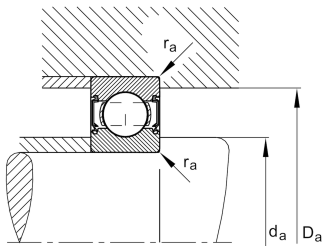
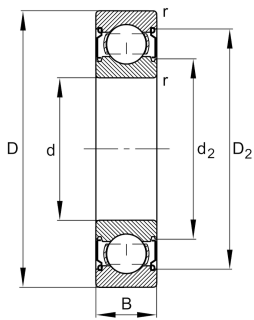


**FAG****6310-C-Z**

Deep groove ball bearing

Deep groove ball bearing 63.-C-Z, single row, Generation C, shield, steel sheet metal cage

Technical information



Your current product variant

Changed internal design	C	GenerationC
Type of Seal	Z	Non-contact shield on one Side
Cage	JN	Steel sheet metal
Tolerance class	P6	Class6 (P6), better then PN
Dimensional / heat stabilization	S0	Rings dimensional stabilized up to 150°
Lubricant	Without	Bearing not greased
Radial internal clearance	CN (Group N)	Normal internal clearance
Bore type	Z	Cylindrical

Main Dimensions & Performance Data

d	50 mm	Bore diameter
D	110 mm	Outside diameter
B	27 mm	Width
C_r	68.000 N	Basic dynamic load rating, radial
C_{0r}	38.000 N	Basic static load rating, radial
C_{ur}	2.650 N	Fatigue load limit, radial
n_G	9.500 1/min	Limiting speed
n_{gr}	8.400 1/min	Reference speed
$\approx m$	1,052 kg	Weight



Mounting dimensions

$d_{a \min}$	61 mm	Minimum diameter shaft shoulder
$D_{a \max}$	99 mm	Maximum diameter of housing shoulder
$r_{a \max}$	2 mm	Maximum fillet radius

Dimensions

r_{\min}	2 mm	Minimum chamfer dimension
D_1	92,1 mm	Shoulder diameter outer ring
D_2	95,22 mm	Caliber diameter outer ring
d_1	68,64 mm	Shoulder diameter inner ring
d_2	66,74 mm	Caliber diameter inner ring


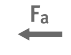
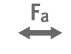



Temperature range

T_{\min}	-30 °C	Operating temperature min.
T_{\max}	150 °C	Operating temperature max.

Calculation factors

f_0	13,1	Calculation factor
-------	------	--------------------

Characteristics

	Radial load
	Axial load in one direction
	Axial load in two directions
	Grease Lubrication
	Oil Lubrication
	Sealed on one side