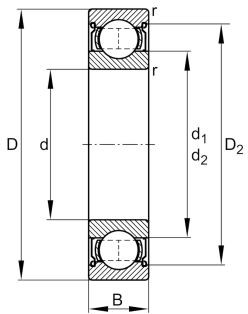


**FAG****6014-2Z-L069-C3**

Deep groove ball bearing

Deep groove ball bearing 60...-2Z, single row, shields, steel sheet metal cage

Technical information



Your current product variant

Sealing	2Z	Non-contact shield on both sides
Cage	JN	Steel sheet metal
Tolerance class	PN	Normal (ISO 492:2023)
Dimensional / heat stabilization	S0	Rings dimensional stabilized up to 150°
Lubricant	L069	Low noise high-temperature grease, interchangeable with grease L207
Radial internal clearance	C3 (Group 3)	Internal clearance larger than CN
Bore type	Z	Cylindrical

Main Dimensions & Performance Data

d	70 mm	Bore diameter
D	110 mm	Outside diameter
B	20 mm	Width
C _r	40.500 N	Basic dynamic load rating, radial
C _{0r}	31.000 N	Basic static load rating, radial
C _{ur}	1.900 N	Fatigue load limit, radial
n _G	7.300 1/min	Limiting speed
n _{gr}	6.800 1/min	Reference speed
m	0,61 kg	Weight



Mounting dimensions

$d_{a \min}$	76 mm	Minimum diameter shaft shoulder
$D_{a \max}$	104 mm	Maximum diameter of housing shoulder
$r_{a \max}$	1 mm	Maximum fillet radius

Dimensions

r_{\min}	1,1 mm	Minimum chamfer dimension
D_1	97,28 mm	Shoulder diameter outer ring
D_2	100,04 mm	Caliber diameter outer ring
d_1	82,75 mm	Shoulder diameter inner ring

Temperature range

T_{\min}	-30 °C	Operating temperature min.
T_{\max}	150 °C	Operating temperature max.

Calculation factors

f_0	15,6	Calculation factor
-------	------	--------------------

Characteristics

-  F_r Radial load
-  F_a Axial load in one direction
-  F_a Axial load in two directions
-  L_h Lifetime lubrication, freedom from maintenance
-  Grease Lubrication
-  Sealed on both sides