

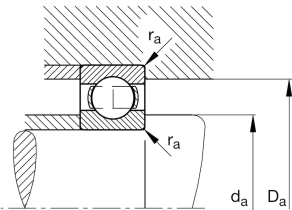
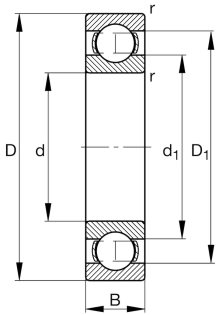
**FAG****6014-N-C3**

## Deep groove ball bearing



Deep groove ball bearing 60.-N, single row, ring groove, steel sheet metal cage

## Technical information



## Your current product variant

Sealing	Without	Not sealed
Design, bearing outer ring	N	Ring groove for snap ring
Cage	JN	Steel sheet metal
Tolerance class	PN	Normal (PN)
Dimensional / heat stabilization	S0	Rings dimensional stabilized up to 150°
Lubricant	Without	Bearing not greased
Radial internal clearance	C3 (Group 3)	Internal clearance larger than CN
Bore type	Z	Cylindrical

## Main Dimensions &amp; Performance Data

d	70 mm	Bore diameter
D	110 mm	Outside diameter
B	20 mm	Width
C <sub>r</sub>	40.500 N	Basic dynamic load rating, radial
C <sub>0r</sub>	31.000 N	Basic static load rating, radial
C <sub>ur</sub>	1.900 N	Fatigue load limit, radial
n <sub>G</sub>	8.600 1/min	Limiting speed
n <sub>gr</sub>	6.800 1/min	Reference speed
≈m	0,574 kg	Weight



### Mounting dimensions

$d_{a \min}$	76 mm	Minimum diameter shaft shoulder
$D_{a \max}$	104 mm	Maximum diameter of housing shoulder
$r_{a \max}$	1 mm	Maximum fillet radius

### Dimensions

$r_{\min}$	1,1 mm	Minimum chamfer dimension
$D_1$	97,28 mm	Shoulder diameter outer ring
$D_2$	100,04 mm	Caliber diameter outer ring
$d_1$	82,75 mm	Shoulder diameter inner ring

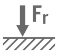





### Temperature range

$T_{\min}$	-30 °C	Operating temperature min.
$T_{\max}$	150 °C	Operating temperature max.

### Calculation factors

$f_0$	15,6	Calculation factor
-------	------	--------------------

### Characteristics

	Radial load
	Axial load in one direction
	Axial load in two directions
	Grease Lubrication
	Oil Lubrication
	Not sealed