

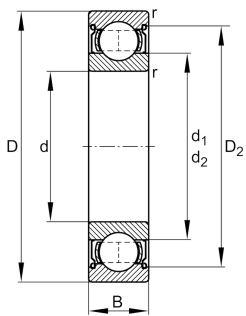
**FAG****6208-Z-NR**

## Deep groove ball bearing



Deep groove ball bearing 62...-Z-NR, single row, shield, ring groove, snap ring, steel sheet metal cage

## Technical information

**Your current product variant**

Type of Seal	Z	Non-contact shield on one Side
Design, bearing outer ring	NR	Ring groove for snap ring with snap ring
Cage	JN	Steel sheet metal
Tolerance class	PN	Normal (PN)
Dimensional / heat stabilization	SN	Rings dimensional stabilized up to 120°
Lubricant	Without	Bearing not greased
Radial internal clearance	CN (Group N)	Normal internal clearance
Bore type	Z	Cylindrical

**Main Dimensions & Performance Data**

d	40 mm	Bore diameter
D	80 mm	Outside diameter
B	18 mm	Width
C <sub>r</sub>	31.000 N	Basic dynamic load rating, radial
C <sub>0r</sub>	17.800 N	Basic static load rating, radial
C <sub>ur</sub>	1.080 N	Fatigue load limit, radial
n <sub>G</sub>	12.300 1/min	Limiting speed
n <sub>gr</sub>	9.300 1/min	Reference speed
m	0,38 kg	Weight



### Mounting dimensions

$d_{a \min}$	47 mm	Minimum diameter shaft shoulder
$D_{a \max}$	73 mm	Maximum diameter of housing shoulder
$r_{a \max}$	1 mm	Maximum fillet radius

### Dimensions

$r_{\min}$	1,1 mm	Minimum chamfer dimension
$D_1$	67,6 mm	Shoulder diameter outer ring
$D_2$	70,36 mm	Caliber diameter outer ring
$d_1$	52,95 mm	Shoulder diameter inner ring

### Temperature range

$T_{\min}$	-30 °C	Operating temperature min.
$T_{\max}$	120 °C	Operating temperature max.

### Calculation factors

$f_0$	14	Calculation factor
-------	----	--------------------

### Characteristics

	Radial load
	Axial load in one direction
	Axial load in two directions
	Grease Lubrication
	Oil Lubrication
	Sealed on one side