

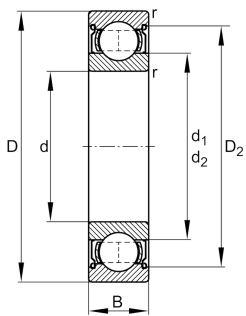
**FAG****6211-Z-NR**

## Deep groove ball bearing



Deep groove ball bearing 62...-Z-NR, single row, shield, ring groove, snap ring, steel sheet metal cage

## Technical information

**Your current product variant**

|                                  |              |  |
|----------------------------------|--------------|--|
| Type of Sealing                  | Z            | Non-contact shield on one Side           |
| Design, bearing outer ring       | NR           | Ring groove for snap ring with snap ring |
| Cage                             | JN           | Steel sheet metal                        |
| Tolerance class                  | PN           | Normal (PN)                              |
| Dimensional / heat stabilization | S0           | Rings dimensional stabilized up to 150°  |
| Lubricant                        | Without      | Bearing not greased                      |
| Radial internal clearance        | CN (Group N) | Normal internal clearance                |
| Bore type                        | Z            | Cylindrical                              |

**Main Dimensions & Performance Data**

|                 |             |                                   |
|-----------------|-------------|-----------------------------------|
| d               | 55 mm       | Bore diameter                     |
| D               | 100 mm      | Outside diameter                  |
| B               | 21 mm       | Width                             |
| C <sub>r</sub>  | 46.000 N    | Basic dynamic load rating, radial |
| C <sub>0r</sub> | 29.000 N    | Basic static load rating, radial  |
| C <sub>ur</sub> | 1.770 N     | Fatigue load limit, radial        |
| n <sub>G</sub>  | 9.500 1/min | Limiting speed                    |
| n <sub>gr</sub> | 7.500 1/min | Reference speed                   |
| m               | 0,63 kg     | Weight                            |



### Mounting dimensions

|              |        |                                      |
|--------------|--------|--------------------------------------|
| $d_{a \min}$ | 64 mm  | Minimum diameter shaft shoulder      |
| $D_{a \max}$ | 91 mm  | Maximum diameter of housing shoulder |
| $r_{a \max}$ | 1,5 mm | Maximum fillet radius                |

### Dimensions

|            |          |                              |
|------------|----------|------------------------------|
| $r_{\min}$ | 1,5 mm   | Minimum chamfer dimension    |
| $D_1$      | 86,16 mm | Shoulder diameter outer ring |
| $D_2$      | 88,2 mm  | Caliber diameter outer ring  |
| $d_1$      | 68,65 mm | Shoulder diameter inner ring |

### Temperature range

|            |        |                            |
|------------|--------|----------------------------|
| $T_{\min}$ | -30 °C | Operating temperature min. |
| $T_{\max}$ | 150 °C | Operating temperature max. |

### Calculation factors

|       |      |                    |
|-------|------|--------------------|
| $f_0$ | 14,2 | Calculation factor |
|-------|------|--------------------|

### Characteristics

|   |                              |
|---|------------------------------|
|  | Radial load                  |
|  | Axial load in one direction  |
|  | Axial load in two directions |
|  | Grease Lubrication           |
|  | Oil Lubrication              |
|  | Sealed on one side           |