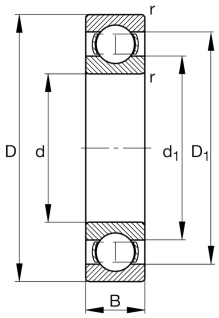


**FAG****6307-M**

Deep groove ball bearing

Deep groove ball bearing 63.-M, single row,
solid brass cage

Technical information



Your current product variant

Type of Sealing	Without	Not sealed
Cage	M	Solid brass cage, rolling element guided
Tolerance class	PN	Normal (PN)
Dimensional / heat stabilization	SN	Rings dimensional stabilized up to 120°
Lubricant	Without	Bearing not greased
Radial internal clearance	CN (Group N)	Normal internal clearance
Bore type	Z	Cylindrical

Main Dimensions & Performance Data

d	35 mm	Bore diameter
D	80 mm	Outside diameter
B	21 mm	Width
C _r	35.500 N	Basic dynamic load rating, radial
C _{0r}	19.100 N	Basic static load rating, radial
C _{ur}	1.290 N	Fatigue load limit, radial
n _G	16.000 1/min	Limiting speed
n _{gr}	9.900 1/min	Reference speed
m	470,71 g	Weight



Mounting dimensions

$d_{a \min}$	44 mm	Minimum diameter shaft shoulder
$D_{a \max}$	71 mm	Maximum diameter of housing shoulder
$r_{a \max}$	1,5 mm	Maximum fillet radius

Dimensions

r_{\min}	1,5 mm	Minimum chamfer dimension
D_1	65,6 mm	Shoulder diameter outer ring
D_2	67,6 mm	Caliber diameter outer ring
d_1	49,3 mm	Shoulder diameter inner ring

Temperature range

T_{\min}	-30 °C	Operating temperature min.
T_{\max}	120 °C	Operating temperature max.

Calculation factors

f_0	13,1	Calculation factor
-------	------	--------------------

Characteristics

	Radial load
	Axial load in one direction
	Axial load in two directions
	Grease Lubrication
	Oil Lubrication
	Not sealed