

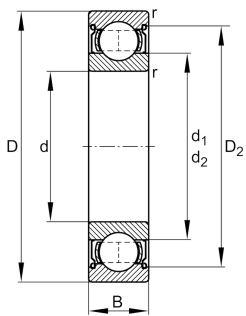
**FAG****6310-Z-N**

Deep groove ball bearing



Deep groove ball bearing 63.-Z-N, single row, shield, ring groove, steel sheet metal cage

Technical information



Your current product variant

| | | |
|----------------------------------|--------------|---|
| Sealing | Z | Non-contact shield on one Side |
| Design, bearing outer ring | N | Ring groove for snap ring |
| Cage | JN | Steel sheet metal |
| Tolerance class | PN | Normal (PN) |
| Dimensional / heat stabilization | S0 | Rings dimensional stabilized up to 150° |
| Lubricant | Without | Bearing not greased |
| Radial internal clearance | CN (Group N) | Normal internal clearance |
| Bore type | Z | Cylindrical |

Main Dimensions & Performance Data

| | | |
|----------|-------------|-----------------------------------|
| d | 50 mm | Bore diameter |
| D | 110 mm | Outside diameter |
| B | 27 mm | Width |
| C_r | 68.000 N | Basic dynamic load rating, radial |
| C_{0r} | 38.500 N | Basic static load rating, radial |
| C_{ur} | 2.650 N | Fatigue load limit, radial |
| n_G | 9.500 1/min | Limiting speed |
| n_{gr} | 7.700 1/min | Reference speed |
| m | 1,09 kg | Weight |



Mounting dimensions

| | | |
|--------------|-------|--------------------------------------|
| $d_{a \min}$ | 61 mm | Minimum diameter shaft shoulder |
| $D_{a \max}$ | 99 mm | Maximum diameter of housing shoulder |
| $r_{a \max}$ | 2 mm | Maximum fillet radius |

Dimensions

| | | |
|------------|----------|------------------------------|
| r_{\min} | 2 mm | Minimum chamfer dimension |
| D_1 | 91,83 mm | Shoulder diameter outer ring |
| D_2 | 95,1 mm | Caliber diameter outer ring |
| d_1 | 68 mm | Shoulder diameter inner ring |

Temperature range

| | | |
|------------|--------|----------------------------|
| T_{\min} | -30 °C | Operating temperature min. |
| T_{\max} | 150 °C | Operating temperature max. |

Calculation factors

| | | |
|-------|------|--------------------|
| f_0 | 13,3 | Calculation factor |
|-------|------|--------------------|

Characteristics

| | |
|---|------------------------------|
|  | Radial load |
|  | Axial load in one direction |
|  | Axial load in two directions |
|  | Grease Lubrication |
|  | Oil Lubrication |
|  | Sealed on one side |