

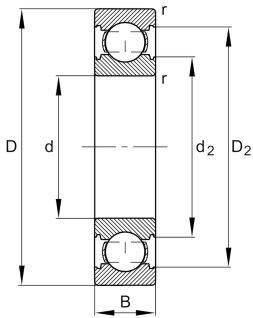
**FAG****6311-C-N**

## Deep groove ball bearing



Deep groove ball bearing 63.-C-N, single row, Generation C, steel sheet metal cage, ring groove

## Technical information



## Your current product variant

Changed internal design	C	GenerationC
Sealing	Without	Not sealed
Design, bearing outer ring	N	Ring groove for snap ring
Cage	JN	Steel sheet metal
Tolerance class	P6	Class6 (P6), better then PN
Dimensional / heat stabilization	S0	Rings dimensional stabilized up to 150°
Lubricant	Without	Bearing not greased
Radial internal clearance	CN (Group N)	Normal internal clearance
Bore type	Z	Cylindrical

## Main Dimensions &amp; Performance Data

d	55 mm	Bore diameter
D	120 mm	Outside diameter
B	29 mm	Width
C <sub>r</sub>	83.000 N	Basic dynamic load rating, radial
C <sub>0r</sub>	47.500 N	Basic static load rating, radial
C <sub>ur</sub>	3.300 N	Fatigue load limit, radial
n <sub>G</sub>	8.500 1/min	Limiting speed
n <sub>gr</sub>	7.800 1/min	Reference speed
m	1,32 kg	Weight



### Mounting dimensions

$d_{a \min}$	66 mm	Minimum diameter shaft shoulder
$D_{a \max}$	109 mm	Maximum diameter of housing shoulder
$r_{a \max}$	2 mm	Maximum fillet radius

### Dimensions

$r_{\min}$	2 mm	Minimum chamfer dimension
$D_1$	102,15 mm	Shoulder diameter outer ring
$D_2$	105,3 mm	Caliber diameter outer ring
$d_1$	74,7 mm	Shoulder diameter inner ring
$d_2$	72,54 mm	Caliber diameter inner ring

### Temperature range

$T_{\min}$	-30 °C	Operating temperature min.
$T_{\max}$	150 °C	Operating temperature max.

### Calculation factors

$f_0$	12,9	Calculation factor
-------	------	--------------------

### Characteristics

	Radial load
	Axial load in one direction
	Axial load in two directions
	Grease Lubrication
	Oil Lubrication
	Not sealed