

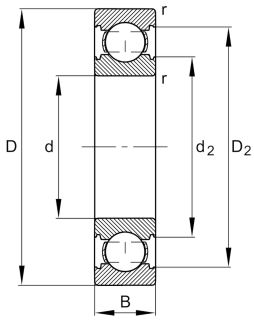
**FAG****6311-C-N-C3**

Deep groove ball bearing



Deep groove ball bearing 63...-C-N, single row, Generation C, steel sheet metal cage, ring groove

Technical information



Your current product variant

| | | |
|----------------------------------|--------------|---|
| Changed internal design | C | GenerationC |
| Sealing | Without | Not sealed |
| Design, bearing outer ring | N | Ring groove for snap ring |
| Cage | JN | Steel sheet metal |
| Tolerance class | P6 | Class 6 (ISO 492:2023) |
| Dimensional / heat stabilization | S0 | Rings dimensional stabilized up to 150° |
| Lubricant | Without | Bearing not greased |
| Radial internal clearance | C3 (Group 3) | Internal clearance larger than CN |
| Bore type | Z | Cylindrical |

Main Dimensions & Performance Data

| | | |
|-----------------|-------------|-----------------------------------|
| d | 55 mm | Bore diameter |
| D | 120 mm | Outside diameter |
| B | 29 mm | Width |
| C _r | 83.000 N | Basic dynamic load rating, radial |
| C _{0r} | 47.500 N | Basic static load rating, radial |
| C _{ur} | 3.300 N | Fatigue load limit, radial |
| n _G | 8.500 1/min | Limiting speed |
| n _{gr} | 7.800 1/min | Reference speed |
| m | 1,33 kg | Weight |



Mounting dimensions

| | | |
|--------------|--------|--------------------------------------|
| $d_{a \min}$ | 66 mm | Minimum diameter shaft shoulder |
| $D_{a \max}$ | 109 mm | Maximum diameter of housing shoulder |
| $r_{a \max}$ | 2 mm | Maximum fillet radius |

Dimensions

| | | |
|------------|-----------|------------------------------|
| r_{\min} | 2 mm | Minimum chamfer dimension |
| D_1 | 102,15 mm | Shoulder diameter outer ring |
| D_2 | 105,3 mm | Caliber diameter outer ring |
| d_1 | 74,7 mm | Shoulder diameter inner ring |
| d_2 | 72,54 mm | Caliber diameter inner ring |

Temperature range

| | | |
|------------|--------|----------------------------|
| T_{\min} | -30 °C | Operating temperature min. |
| T_{\max} | 150 °C | Operating temperature max. |

Calculation factors

| | | |
|-------|------|--------------------|
| f_0 | 12,9 | Calculation factor |
|-------|------|--------------------|

Characteristics

| | |
|---|------------------------------|
|  | Radial load |
|  | Axial load in one direction |
|  | Axial load in two directions |
|  | Grease Lubrication |
|  | Oil Lubrication |
|  | Not sealed |