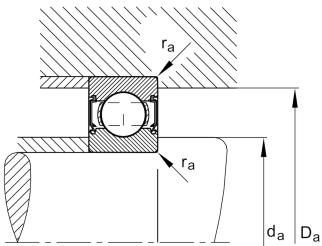
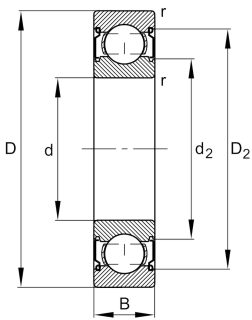


**FAG****6312-C-2Z-L408-C3**

Deep groove ball bearing

Deep groove ball bearing 63...-C-2Z, single row, Generation C, shields, steel sheet metal cage

## Technical information



## Your current product variant

Changed internal design	C	GenerationC
Type of seal	2Z	Non-contact shield on both sides
Cage	JN	Steel sheet metal
Tolerance class	P6	Class6 (P6), better than PN
Dimensional / heat stabilization	S0	Rings dimensional stabilized up to 150°
Lubricant	L408	Grease (L408/customer specific)
Radial internal clearance	C3 (Group 3)	Internal clearance larger than CN
Bore type	Z	Cylindrical

## Main Dimensions &amp; Performance Data

d	60 mm	Bore diameter
D	130 mm	Outside diameter
B	31 mm	Width
C <sub>r</sub>	89.000 N	Basic dynamic load rating, radial
C <sub>0r</sub>	52.000 N	Basic static load rating, radial
C <sub>ur</sub>	3.600 N	Fatigue load limit, radial
n <sub>G</sub>	6.700 1/min	Limiting speed
n <sub>gr</sub>	7.400 1/min	Reference speed
≈m	1,698 kg	Weight



### Mounting dimensions

$d_{a \min}$	72 mm	Minimum diameter shaft shoulder
$D_{a \max}$	118 mm	Maximum diameter of housing shoulder
$r_{a \max}$	2,1 mm	Maximum fillet radius

### Dimensions

$r_{\min}$	2,1 mm	Minimum chamfer dimension
$D_1$	109,02 mm	Shoulder diameter outer ring
$D_2$	112,14 mm	Caliber diameter outer ring
$d_1$	81,7 mm	Shoulder diameter inner ring
$d_2$	79,58 mm	Caliber diameter inner ring

### Temperature range

$T_{\min}$	-30 °C	Operating temperature min.
$T_{\max}$	150 °C	Operating temperature max.

### Calculation factors

$f_0$	13,2	Calculation factor
-------	------	--------------------

### Characteristics

	Radial load
	Axial load in one direction
	Axial load in two directions
	Lifetime lubrication, freedom from maintenance
	Grease Lubrication
	Sealed on both sides