

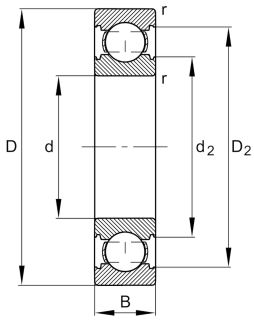
**FAG****6312-C-N-C3**

Deep groove ball bearing



Deep groove ball bearing 63.-C-N, single row, Generation C, steel sheet metal cage, ring groove

Technical information

**Your current product variant**

Changed internal design	C	GenerationC
Sealing	Without	Not sealed
Design, bearing outer ring	N	Ring groove for snap ring
Cage	JN	Steel sheet metal
Tolerance class	P6	Class6 (P6), better then PN
Dimensional / heat stabilization	S0	Rings dimensional stabilized up to 150°
Lubricant	Without	Bearing not greased
Radial internal clearance	C3 (Group 3)	Internal clearance larger than CN
Bore type	Z	Cylindrical

Main Dimensions & Performance Data

d	60 mm	Bore diameter
D	130 mm	Outside diameter
B	31 mm	Width
C _r	89.000 N	Basic dynamic load rating, radial
C _{0r}	52.000 N	Basic static load rating, radial
C _{ur}	3.600 N	Fatigue load limit, radial
n _G	7.900 1/min	Limiting speed
n _{gr}	7.400 1/min	Reference speed
m	1,646 kg	Weight



Mounting dimensions

$d_{a \min}$	72 mm	Minimum diameter shaft shoulder
$D_{a \max}$	118 mm	Maximum diameter of housing shoulder
$r_{a \max}$	2,1 mm	Maximum fillet radius

Dimensions

r_{\min}	2,1 mm	Minimum chamfer dimension
D_1	109,02 mm	Shoulder diameter outer ring
D_2	112,14 mm	Caliber diameter outer ring
d_1	81,7 mm	Shoulder diameter inner ring
d_2	79,58 mm	Caliber diameter inner ring

Temperature range

T_{\min}	-30 °C	Operating temperature min.
T_{\max}	150 °C	Operating temperature max.

Calculation factors

f_0	13,2	Calculation factor
-------	------	--------------------

Characteristics

	Radial load
	Axial load in one direction
	Axial load in two directions
	Grease Lubrication
	Oil Lubrication
	Not sealed