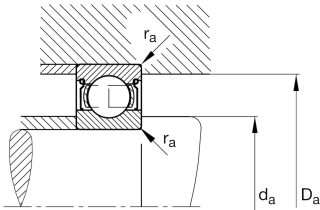
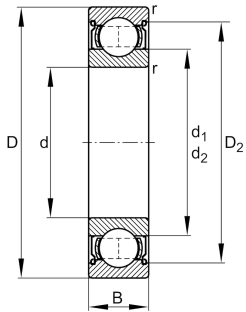


**FAG****6320-2Z-L038-C3**

Deep groove ball bearing

Deep groove ball bearing 63...-2Z, single row, shields, steel sheet metal cage

Technical information



Your current product variant

Sealing	2Z	Non-contact shield on both sides
Cage	JN	Steel sheet metal
Tolerance class	PN	Normal (ISO 492:2023)
Dimensional / heat stabilization	S0	Rings dimensional stabilized up to 150°
Lubricant	L038	Grease (L038/customer specific)
Radial internal clearance	C3 (Group 3)	Internal clearance larger than CN
Bore type	Z	Cylindrical

Main Dimensions & Performance Data

d	100 mm	Bore diameter
D	215 mm	Outside diameter
B	47 mm	Width
C _r	177.000 N	Basic dynamic load rating, radial
C _{0r}	137.000 N	Basic static load rating, radial
C _{ur}	7.400 N	Fatigue load limit, radial
n _G	3.600 1/min	Limiting speed
n _{gr}	4.600 1/min	Reference speed
≈m	7,346 kg	Weight



Mounting dimensions

$d_{a \min}$	114 mm	Minimum diameter shaft shoulder
$D_{a \max}$	201 mm	Maximum diameter of housing shoulder
$r_{a \max}$	2,5 mm	Maximum fillet radius

Dimensions

r_{\min}	3 mm	Minimum chamfer dimension
D_1	179,14 mm	Shoulder diameter outer ring
D_2	184,58 mm	Caliber diameter outer ring
d_1	138,1 mm	Shoulder diameter inner ring

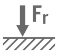
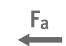




Temperature range

T_{\min}	-20 °C	Operating temperature min.
T_{\max}	150 °C	Operating temperature max.

Calculation factors

f_0	13,7	Calculation factor
-------	------	--------------------

Characteristics

	Radial load
	Axial load in one direction
	Axial load in two directions
	Lifetime lubrication, freedom from maintenance
	Grease Lubrication
	Sealed on both sides