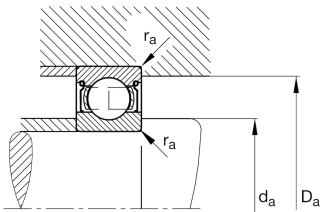
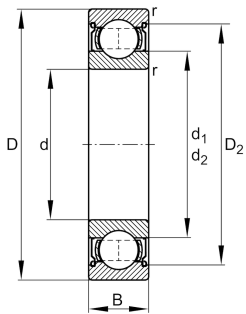


**FAG****6410-2Z**

Deep groove ball bearing

Deep groove ball bearing 64...-2Z, single row, shields, steel sheet metal cage

Technical information



Your current product variant

Sealing	2Z	Non-contact shield on both sides
Cage	JN	Steel sheet metal
Tolerance class	PN	Normal (ISO 492:2023)
Dimensional / heat stabilization	S0	Rings dimensional stabilized up to 150°
Lubricant	GA13	Ball bearing and insert bearing grease
Radial internal clearance	CN (Group N)	Normal internal clearance
Bore type	Z	Cylindrical

Main Dimensions & Performance Data

d	50 mm	Bore diameter
D	130 mm	Outside diameter
B	31 mm	Width
C _r	89.000 N	Basic dynamic load rating, radial
C _{0r}	52.000 N	Basic static load rating, radial
C _{ur}	3.600 N	Fatigue load limit, radial
n _G	6.700 1/min	Limiting speed
n _{gr}	6.500 1/min	Reference speed
≈m	1,907 kg	Weight



Mounting dimensions

$d_{a \min}$	64 mm	Minimum diameter shaft shoulder
$D_{a \max}$	116 mm	Maximum diameter of housing shoulder
$r_{a \max}$	2,1 mm	Maximum fillet radius

Dimensions

r_{\min}	2,1 mm	Minimum chamfer dimension
D_1	108,62 mm	Shoulder diameter outer ring
D_2	113,14 mm	Caliber diameter outer ring
d_1	81,25 mm	Shoulder diameter inner ring


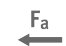




Temperature range

T_{\min}	-20 °C	Operating temperature min.
T_{\max}	120 °C	Operating temperature max.

Calculation factors

f_0	13,2	Calculation factor
-------	------	--------------------

Characteristics

-  Radial load
-  Axial load in one direction
-  Axial load in two directions
-  Lifetime lubrication, freedom from maintenance
-  Grease Lubrication
-  Sealed on both sides