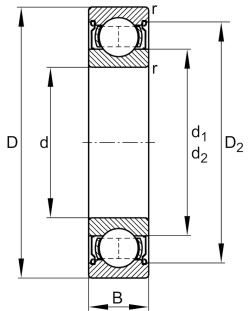


**FAG****HC6007-2Z-L069-C3**

Deep groove ball bearing

Deep groove ball bearing HC60.-2Z, Hybrid bearing, single row, shields, steel sheet metal cage

Technical information



Your current product variant

Material Bearing	HC	Hybrid bearing, rolling elements ceramic, bearing rings made of steel
Sealing	2Z	Non-contact shield on both sides
Cage	JN	Steel sheet metal
Tolerance class	PN	Normal (ISO 492:2023)
Dimensional / heat stabilization	SN	Rings dimensional stabilized up to 120°
Lubricant	L069	Low noise high-temperature grease, interchangeable with grease L207
Radial internal clearance	C3 (Group 3)	Internal clearance larger than CN
Bore type	Z	Cylindrical

Main Dimensions & Performance Data

d	35 mm	Bore diameter
D	62 mm	Outside diameter
B	14 mm	Width
C_r	18.200 N	Basic dynamic load rating, radial
C_{0r}	10.300 N	Basic static load rating, radial
C_{ur}	410 N	Fatigue load limit, radial
n_G	16.400 1/min	Limiting speed
n_{gr}	12.600 1/min	Reference speed
m	0,159 kg	Weight



Mounting dimensions

$d_{a \min}$	39,6 mm	Minimum diameter shaft shoulder
$D_{a \max}$	57,4 mm	Maximum diameter of housing shoulder
$r_{a \max}$	1 mm	Maximum fillet radius

Dimensions

r_{\min}	1 mm	Minimum chamfer dimension
D_1	53,1 mm	Shoulder diameter outer ring
D_2	55,4 mm	Caliber diameter outer ring
d_1	43,2 mm	Shoulder diameter inner ring

Temperature range

T_{\min}	-30 °C	Operating temperature min.
T_{\max}	120 °C	Operating temperature max.

Calculation factors

f_0	14,9	Calculation factor
-------	------	--------------------

Characteristics

	Radial load
	Axial load in one direction
	Axial load in two directions
	Lifetime lubrication, freedom from maintenance
	Grease Lubrication
	Sealed on both sides
	Current insulated