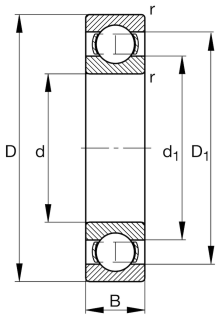


**FAG****6314-J20C-C3**

Deep groove ball bearing

Deep groove ball bearing 63.-J20C, single row, steel sheet metal cage, ceramic coated

Technical information



Your current product variant

Sealing	Without	Not sealed
Cage	JN	Steel sheet metal
Tolerance class	PN	Normal (ISO 492:2023)
Dimensional / heat stabilization	S0	Rings dimensional stabilized up to 150°
Lubricant	Without	Bearing not greased
Radial internal clearance	C3 (Group 3)	Internal clearance larger than CN
Bore type	Z	Cylindrical
Coating	J20C	Current insulation, inner ring ceramic coated

Main Dimensions & Performance Data

d	70 mm	Bore diameter
D	150 mm	Outside diameter
B	35 mm	Width
C _r	115.000 N	Basic dynamic load rating, radial
C _{0r}	69.000 N	Basic static load rating, radial
C _{ur}	4.600 N	Fatigue load limit, radial
n _G	6.800 1/min	Limiting speed
n _{gr}	6.100 1/min	Reference speed
≈m	2,55 kg	Weight



Mounting dimensions

$d_{a \min}$	82 mm	Minimum diameter shaft shoulder
$D_{a \max}$	138 mm	Maximum diameter of housing shoulder
$r_{a \max}$	2,1 mm	Maximum fillet radius

Dimensions

r_{\min}	2,1 mm	Minimum chamfer dimension
D_1	126,34 mm	Shoulder diameter outer ring
d_1	94,75 mm	Shoulder diameter inner ring

Temperature range

T_{\min}	-30 °C	Operating temperature min.
T_{\max}	150 °C	Operating temperature max.

Calculation factors

f_0	13,4	Calculation factor
-------	------	--------------------

Characteristics

	Radial load
	Axial load in one direction
	Axial load in two directions
	Grease Lubrication
	Oil Lubrication
	Not sealed
	Current insulated