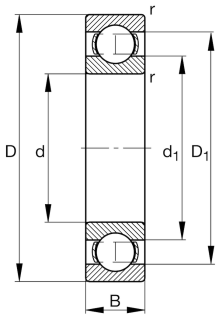


**FAG****6324-J20C-C3**

Deep groove ball bearing

Deep groove ball bearing 63.-J20C, single row, steel sheet metal cage, ceramic coated

Technical information



Your current product variant

Sealing	Without	Not sealed
Cage	JN	Steel sheet metal
Tolerance class	PN	Normal (PN)
Dimensional / heat stabilization	S1	Rings dimensional stabilized up to 200°
Lubricant	Without	Bearing not greased
Radial internal clearance	C3 (Group 3)	Internal clearance larger than CN
Bore type	Z	Cylindrical
Coating	J20C	Current insulation, inner ring ceramic coated

Main Dimensions & Performance Data

d	120 mm	Bore diameter
D	260 mm	Outside diameter
B	55 mm	Width
C _r	225.000 N	Basic dynamic load rating, radial
C _{0r}	195.000 N	Basic static load rating, radial
C _{ur}	9.800 N	Fatigue load limit, radial
n _G	3.500 1/min	Limiting speed
n _{gr}	3.800 1/min	Reference speed
≈m	12,8 kg	Weight



Mounting dimensions

$d_{a \min}$	134 mm	Minimum diameter shaft shoulder
$D_{a \max}$	246 mm	Maximum diameter of housing shoulder
$r_{a \max}$	2,5 mm	Maximum fillet radius

Dimensions

r_{\min}	3 mm	Minimum chamfer dimension
D_1	215,6 mm	Shoulder diameter outer ring
d_1	165,4 mm	Shoulder diameter inner ring

Temperature range

T_{\min}	-30 °C	Operating temperature min.
T_{\max}	200 °C	Operating temperature max.

Calculation factors

f_0	13,8	Calculation factor
-------	------	--------------------

Characteristics

	Radial load
	Axial load in one direction
	Axial load in two directions
	Grease Lubrication
	Oil Lubrication
	Not sealed
	Current insulated