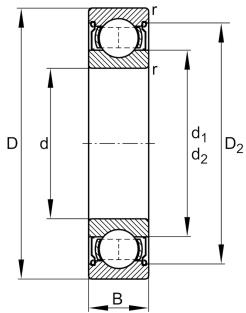


IMAGE
COMING SOON**FAG****F606-2Z-HLC** [↗](#)

Deep groove ball bearing

Deep groove ball bearing F60..-2Z, single row, with flange, shields, steel sheet metal cage

Technical information

**Your current product variant**

Logistical code	HLC	-
Cage	JN	Steel sheet metal
Design, bearing outer ring	F	Flange
Type of Seal	2Z	Non-contact shield on both sides
Tolerance class	PN	Normal (PN)
Dimensional / heat stabilization	SN	Rings dimensional stabilized up to 120°
Lubricant	Lubricating grease	
Radial internal clearance	CN (Group N)	Normal internal clearance

Main Dimensions & Performance Data

d	6 mm	Bore diameter
D	17 mm	Outside diameter
B	6 mm	Width
C_r	2.260 N	Basic dynamic load rating, radial
C_{0r}	838 N	Basic static load rating, radial
C_{ur}	52 N	Fatigue load limit, radial
n_G	48.000 1/min	Limiting speed
n_{gr}	41.000 1/min	Reference speed
m	7,42 g	Weight



Dimensions

r_{\min}	0,3 mm	Minimum chamfer dimension
D_1	13,75 mm	Shoulder diameter outer ring
D_2	14,8 mm	Caliber diameter outer ring
d_1	8,92 mm	Shoulder diameter inner ring
d_2	8,2 mm	Caliber diameter inner ring
B_f	1,2 mm	Width flange
D_f	19 mm	Outer diameter flange







Temperature range

T_{\min}	-30 °C	Operating temperature min.
T_{\max}	120 °C	Operating temperature max.

Calculation factors

f_0	11,4	Calculation factor
-------	------	--------------------

Characteristics

-  Radial load
-  Axial load in one direction
-  Axial load in two directions
-  Lifetime lubrication, freedom from maintenance
-  Grease Lubrication
-  Sealed on both sides