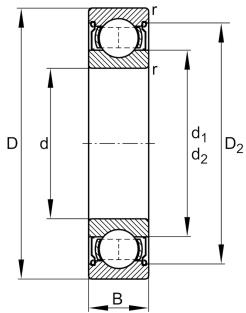


IMAGE
COMING SOON**FAG****F608-2Z-HLC** [↗](#)

Deep groove ball bearing

Deep groove ball bearing F60..-2Z, single row, with flange, shields, steel sheet metal cage

Technical information

**Your current product variant**

Logistical code	HLC	-
Cage	JN	Steel sheet metal
Design, bearing outer ring	F	Flange
Type of Seal	2Z	Non-contact shield on both sides
Tolerance class	PN	Normal (PN)
Dimensional / heat stabilization	SN	Rings dimensional stabilized up to 120°
Lubricant	Lubricating grease	
Radial internal clearance	CN (Group N)	Normal internal clearance

Main Dimensions & Performance Data

d	8 mm	Bore diameter
D	22 mm	Outside diameter
B	7 mm	Width
C_r	3.300 N	Basic dynamic load rating, radial
C_{0r}	1.370 N	Basic static load rating, radial
C_{ur}	41,5 N	Fatigue load limit, radial
n_G	40.000 1/min	Limiting speed
n_{gr}	31.500 1/min	Reference speed
m	14,2 g	Weight



Dimensions

r_{\min}	0,3 mm	Minimum chamfer dimension
D_1	18 mm	Shoulder diameter outer ring
D_2	19,03 mm	Caliber diameter outer ring
d_1	12,14 mm	Shoulder diameter inner ring
d_2	10,5 mm	Caliber diameter inner ring
B_f	1,5 mm	Width flange
D_f	25 mm	Outer diameter flange

Temperature range

T_{\min}	-30 °C	Operating temperature min.
T_{\max}	120 °C	Operating temperature max.

Calculation factors

f_0	12,4	Calculation factor
-------	------	--------------------

Characteristics



Radial load



Axial load in one direction



Axial load in two directions



Lifetime lubrication, freedom from maintenance



Grease Lubrication



Sealed on both sides