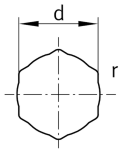
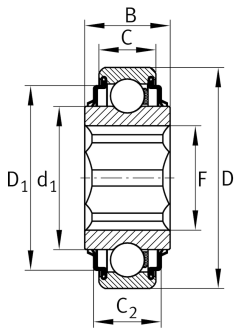


**SK014-205-KRR**

## Deep groove ball bearing

Self-aligning deep groove ball bearings SK...-KRR, Cylindrical outer ring, inner ring with hexagonal bore, R seal on both sides

## Technical information



## Your current product variant

Type of Sealing	KRR	Lip seals on both sides
Deviating ballset	205	205

## Main Dimensions &amp; Performance Data

D	52 mm	Outside diameter
B	25,4 mm	Width
C <sub>r</sub>	14.900 N	Basic dynamic load rating, radial
C <sub>0r</sub>	7.800 N	Basic static load rating, radial
≈m	175 g	Weight

## Dimensions

D <sub>1</sub>	42,5 mm	Outside diameter seal
C	15 mm	Width, outer ring
F	26,5 mm	Maximum distance hexagonal bore
r	0,12 mm	Radius hexagonal bore
C <sub>2</sub>	16,5 mm	Sealing total width
d <sub>1</sub>	33,83 mm	Rib diameter inner ring
d	22,225 mm	Width of flats
d	22,225 mm	Width across flats (Inch)
	0,15 mm	Width across flats upper tolerance
	0,05 mm	Width across flats lower tolerance








### Temperature range

$T_{min}$	-20 °C	Operating temperature min.
$T_{max}$	120 °C	Operating temperature max.

### Calculation factors

$f_0$	13,8	Calculation factor
-------	------	--------------------

### Characteristics

-  Radial load
-  Axial load in one direction
-  Axial load in two directions
-  Lifetime lubrication, freedom from maintenance
-  Grease Lubrication
-  Sealed on both sides
-  Static angular error and misalignment