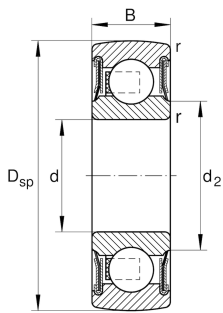


**308-NPP-B**

Self-aligning deep groove ball bearings

## Technical information

**Your current product variant**

Sealing	NPP
Shape of outer surface	B Spherical

**Main Dimensions & Performance Data**

d	40 mm	Bore diameter
D <sub>SP</sub>	90 mm	Outside diameter
B	23 mm	Width
C <sub>r</sub>	47.000 N	Basic dynamic load rating, radial
C <sub>0r</sub>	26.000 N	Basic static load rating, radial
≈m	0,63 kg	Weight

**Dimensions**

d <sub>2</sub>	55,6 mm	Rib diameter sealing inner ring
r <sub>min</sub>	0,6 mm	Minimum chamfer dimension

**Temperature range**

T <sub>min</sub>	-20 °C	Operating temperature min.
T <sub>max</sub>	100 °C	Operating temperature max.



## Characteristics

---

-  Radial load
-  Axial load in one direction
-  Axial load in two directions
-  Lifetime lubrication, freedom from maintenance
-  Grease Lubrication
-  Sealed on both sides
-  Static angular error and misalignment