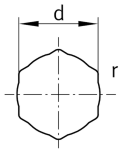
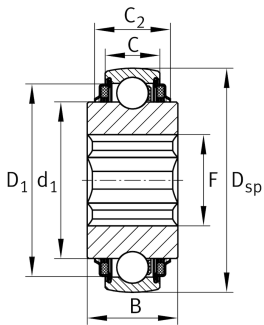


**SK104-207-KTT-B-L402/70** [↗](#)

Self-aligning deep groove ball bearings

Self-aligning deep groove ball bearings SK...-KTT-B, Spherical outer ring, inner ring with hexagonal bore, T seal on both sides

Technical information



Your current product variant

Type of Sealing	KTT	Triple lip seals on both sides
Shape of outer surface	B	Spherical
Deviating ballset	207	207

Main Dimensions & Performance Data

D _{SP}	72 mm	Outside diameter
B	37,9 mm	Width
C _r	27.500 N	Basic dynamic load rating, radial
C _{0r}	15.300 N	Basic static load rating, radial
≈m	444 g	Weight



Dimensions

D ₁	60 mm	Outside diameter seal
C	19 mm	Width, outer ring
F	37,2 mm	Maximum distance hexagonal bore
r	0,12 mm	Radius hexagonal bore
C ₂	22,7 mm	Sealing total width
d ₁	46,84 mm	Rib diameter inner ring
d	31,75 mm	Width of flats
	0,15 mm	Width across flats upper tolerance
d	31,75 mm	Width across flats (Inch)
	0,05 mm	Width across flats lower tolerance


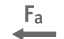





Temperature range

T _{min}	-20 °C	Operating temperature min.
T _{max}	100 °C	Operating temperature max.

Calculation factors

f ₀	13,8	Calculation factor
----------------	------	--------------------

Characteristics

	Radial load
	Axial load in one direction
	Axial load in two directions
	Lifetime lubrication, freedom from maintenance
	Grease Lubrication
	Sealed on both sides
	Static angular error and misalignment