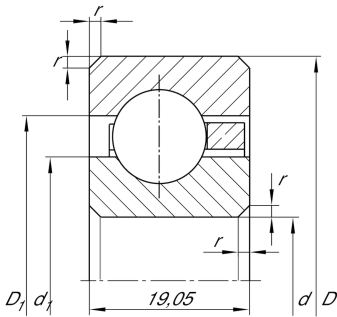


**CSCF160**

Deep groove ball bearing

Deep groove ball bearing, Thin section bearing CSCF, brass sheet metal cage

Technical information



Your current product variant

Logistical code	HLE	-
Type of Seal	Without	Not sealed
Cage	YH	Brass sheet metal
Dimensional / heat stabilization	SN	Rings dimensional stabilized up to 120°
Tolerance class	PL1	Class PL1, Normal
Radial internal clearance	PL1	Class PL1, Normal
Lubricant	Without	Bearing not greased

Main Dimensions & Performance Data

d	406,4 mm	Bore diameter
D	444,5 mm	Outside diameter
B	19,05 mm	Width
C _r	36.000 N	Basic dynamic load rating, radial
C _{0r}	76.000 N	Basic static load rating, radial
n _G	1.240 1/min	Limiting speed
m	3,22 kg	Weight




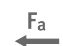




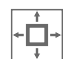
Dimensions

r_{\min}	2 mm	Minimum chamfer dimension
d_1	420,5 mm	Shoulder diameter inner ring
D_1	430,4 mm	Shoulder diameter outer ring

Temperature range

T_{\min}	-30 °C	Operating temperature min.
T_{\max}	120 °C	Operating temperature max.

Characteristics

-  Radial load
-  Axial load in one direction
-  Axial load in two directions
-  Grease Lubrication
-  Oil Lubrication
-  Not sealed
-  Large bearing