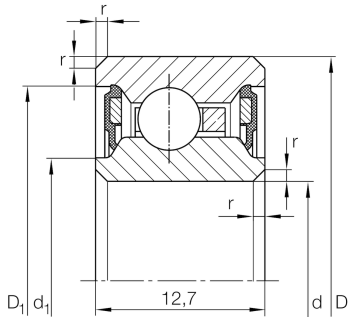


**CSCU055-2RS**

Deep groove ball bearing

Deep groove ball bearing, Thin section bearing CSCU...-2RS, seals, brass sheet metal cage

Technical information



Your current product variant

| | | |
|----------------------------------|--------------------|---|
| Logistical code | HLE | - |
| Sealing | 2RS | Contact seal on both sides |
| Cage | YH | Brass sheet metal |
| Dimensional / heat stabilization | SN | Rings dimensional stabilized up to 120° |
| Tolerance class | PL1 | Class PL1, Normal |
| Radial internal clearance | PL1 | Class PL1, Normal |
| Lubricant | Lubricating grease | |

Main Dimensions & Performance Data

| | | |
|-------------|-------------|-----------------------------------|
| d | 139,7 mm | Bore diameter |
| D | 158,75 mm | Outside diameter |
| B | 12,7 mm | Width |
| C_r | 8.700 N | Basic dynamic load rating, radial |
| C_{0r} | 11.200 N | Basic static load rating, radial |
| n_G | 1.850 1/min | Limiting speed |
| $\approx m$ | 340 g | Weight |




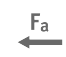
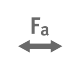



Dimensions

| | | |
|------------|----------|------------------------------|
| r_{\min} | 0,38 mm | Minimum chamfer dimension |
| d_1 | 146,7 mm | Shoulder diameter inner ring |
| D_1 | 151,7 mm | Shoulder diameter outer ring |
| d_1 | 143,5 mm | Caliber diameter inner ring |
| D_1 | 153,5 mm | Caliber diameter outer ring |

Temperature range

| | | |
|------------|--------|----------------------------|
| T_{\min} | -25 °C | Operating temperature min. |
| T_{\max} | 120 °C | Operating temperature max. |

Characteristics

-  F_r Radial load
-  F_a Axial load in one direction
-  F_a Axial load in two directions
-  L_h Lifetime lubrication, freedom from maintenance
-  Grease Lubrication
-  Sealed on both sides