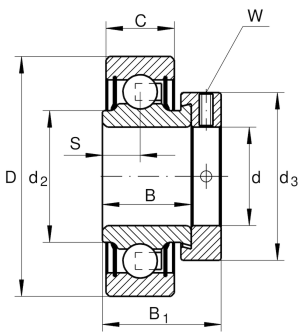
**RAE12-XL-NPP-FA106**

Radial insert ball bearing

Radial insert ball bearing RAE...XL-NPP

X-life

## Technical information

**Main Dimensions & Performance Data**

d	12 mm	Bore diameter
D	40 mm	Outside diameter
B	19 mm	Width
B <sub>1</sub>	28,6 mm	Locking collar total width
C <sub>r</sub>	9.800 N	Basic dynamic load rating, radial
C <sub>0r</sub>	4.750 N	Basic static load rating, radial
C <sub>ur</sub>	248 N	Fatigue load limit, radial
≈m	0,13 kg	Weight

**Dimensions**

C	12 mm	Width, outer ring
S	6,5 mm	Distance raceway
d <sub>2</sub>	23 mm	Rib diameter sealing inner ring
d <sub>3</sub>	28,4 mm	Outside diameter locking collar/locknut
W	3 mm	Width of flats

**Temperature range**

T <sub>min</sub>	-20 °C	Operating temperature min.
T <sub>max</sub>	120 °C	Operating temperature max.



### Calculation factors

---

$f_0$	13	Calculation factor
-------	----	--------------------

### Characteristics

---



Radial load



Axial load in one direction



Axial load in two directions



Lifetime lubrication, freedom from maintenance



Grease Lubrication



Sealed on both sides