

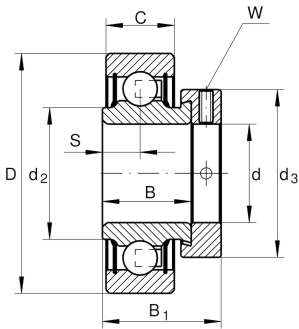
**RAE45-XL-NPP-FA106**

Radial insert ball bearing

Radial insert ball bearing RAE...XL-NPP

X-life

Technical information

**Main Dimensions & Performance Data**

d	45 mm	Bore diameter
D	85 mm	Outside diameter
B	30,2 mm	Width
B ₁	43,8 mm	Locking collar total width
C _r	32.500 N	Basic dynamic load rating, radial
C _{0r}	20.400 N	Basic static load rating, radial
C _{ur}	970 N	Fatigue load limit, radial
≈m	0,72 kg	Weight

Dimensions

C	22 mm	Width, outer ring
S	11 mm	Distance raceway
d ₂	54,5 mm	Rib diameter sealing inner ring
d ₃	63 mm	Outside diameter locking collar/locknut
W	5 mm	Width of flats

Temperature range

T _{min}	-20 °C	Operating temperature min.
T _{max}	120 °C	Operating temperature max.



Calculation factors

f_0	14,1	Calculation factor
-------	------	--------------------

Characteristics



Radial load



Axial load in one direction



Axial load in two directions



Lifetime lubrication, freedom from maintenance



Grease Lubrication



Sealed on both sides