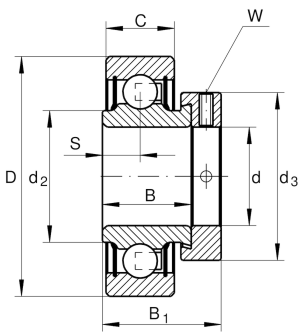
**RALE25-XL-NPP**

## Radial insert ball bearing

Radial insert ball bearings RALE...-NPP,  
cylindrical outer ring, location by eccentric  
locking collar, P seals on both sides

X-life

## Technical information

**Main Dimensions & Performance Data**

d	25 mm	Bore diameter
D	47 mm	Outside diameter
B	17,5 mm	Width
B <sub>1</sub>	25,5 mm	Locking collar total width
C <sub>r</sub>	10.100 N	Basic dynamic load rating, radial
C <sub>0r</sub>	5.900 N	Basic static load rating, radial
C <sub>ur</sub>	280 N	Fatigue load limit, radial
≈m	0,13 kg	Weight

**Dimensions**

C	12 mm	Width, outer ring
S	6 mm	Distance raceway
d <sub>2</sub>	30 mm	Rib diameter sealing inner ring
d <sub>3</sub>	36 mm	Outside diameter locking collar/locknut
W	2,5 mm	Width of flats

**Calculation factors**

f <sub>0</sub>	14,6	Calculation factor
----------------	------	--------------------



### Characteristics

---



Radial load



Axial load in one direction



Axial load in two directions



Lifetime lubrication, freedom from maintenance



Grease Lubrication



Sealed on both sides