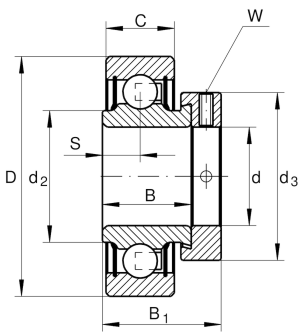
**RALE30-XL-NPP-FA106**

Radial insert ball bearing

Radial insert ball bearings RALE...-NPP,
cylindrical outer ring, location by eccentric
locking collar, P seals on both sides

X-life

Technical information

**Main Dimensions & Performance Data**

d	30 mm	Bore diameter
D	55 mm	Outside diameter
B	18,5 mm	Width
B ₁	26,5 mm	Locking collar total width
C _r	13.200 N	Basic dynamic load rating, radial
C _{0r}	8.300 N	Basic static load rating, radial
C _{ur}	430 N	Fatigue load limit, radial
≈m	0,18 kg	Weight

Dimensions

C	13 mm	Width, outer ring
S	6,5 mm	Distance raceway
d ₂	35,7 mm	Rib diameter sealing inner ring
d ₃	42,5 mm	Outside diameter locking collar/locknut
W	2,5 mm	Width of flats

Calculation factors

f ₀	14,8	Calculation factor
----------------	------	--------------------



Characteristics



Radial load



Axial load in one direction



Axial load in two directions



Lifetime lubrication, freedom from maintenance



Grease Lubrication



Sealed on both sides