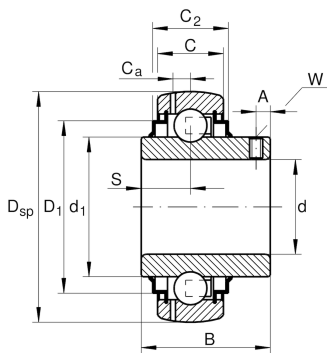


**GYE70-KRR-B-L285/50** [↗](#)

Radial insert ball bearing

Radial insert ball bearing GYE...KRR-B

Technical information

**Your current product variant**

Lubricant	L285/50	Grease (L285/50)
-----------	---------	------------------

Main Dimensions & Performance Data

d	70 mm	Bore diameter
D SP	125 mm	Outside diameter
B	74,6 mm	Width
C _{0r}	44.000 N	Basic static load rating, radial
C _{ur}	2.020 N	Fatigue load limit, radial
C _r	62.000 N	Basic dynamic load rating, radial
≈m	1,94 kg	Weight

Dimensions

C	28 mm	Width, outer ring
C ₂	32,7 mm	Sealing total width
S	30,2 mm	Distance raceway
d ₁	85,3 mm	Rib diameter inner ring
D ₁	109 mm	Outside diameter seal
C _a	8,9 mm	Distance to lubrication hole
A	12 mm	Distance thread
W	5 mm	Width of flats



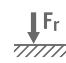
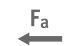





Temperature range

T_{min}	-20 °C	Operating temperature min.
T_{max}	100 °C	Operating temperature max.

Calculation factors

f_0	14,4	Calculation factor
-------	------	--------------------

Characteristics

-  Radial load
-  Axial load in one direction
-  Axial load in two directions
-  Lifetime lubrication, freedom from maintenance
-  Grease Lubrication
-  Sealed on both sides
-  Static angular error and misalignment