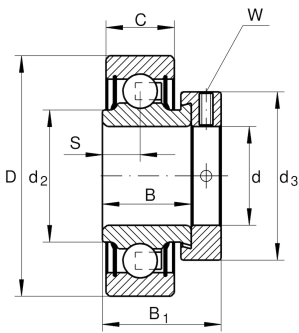


**RAL012-NPP**

Radial insert ball bearing

Radial insert ball bearings RAL...-NPP, cylindrical outer ring, location by eccentric locking collar, P seals on both sides, inch size bore

Technical information

**Main Dimensions & Performance Data**

d	19,05 mm	Bore diameter
d	19,05 mm	Bore diameter, inch
D	42 mm	Outside diameter
B	16,7 mm	Width
B ₁	24,6 mm	Locking collar total width
C _r	9.400 N	Basic dynamic load rating, radial
C _{0r}	5.000 N	Basic static load rating, radial
C _{ur}	231 N	Fatigue load limit, radial
≈m	104,17 g	Weight

Dimensions

C	12 mm	Width, outer ring
S	6 mm	Distance raceway
d ₂	25,4 mm	Rib diameter sealing inner ring
d ₃	30 mm	Outside diameter locking collar/locknut
W	3,175 mm	Width across flats (Inch)

Calculation factors

f ₀	13,8	Calculation factor
----------------	------	--------------------



Characteristics



Radial load



Axial load in one direction



Axial load in two directions



Lifetime lubrication, freedom from maintenance



Grease Lubrication



Sealed on both sides