

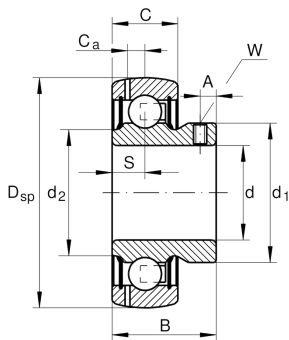
**AY30-XL-NPP-B**

Radial insert ball bearing

Radial insert ball bearings AY..-NPP-B,
spherical outer ring, location by grub screws,
P seals on both sides

X-life

Technical information

**Main Dimensions & Performance Data**

d	30 mm	Bore diameter
D _{SP}	62 mm	Outside diameter
B	30 mm	Width
C _{0r}	11.300 N	Basic static load rating, radial
C _{ur}	480 N	Fatigue load limit, radial
C _r	19.500 N	Basic dynamic load rating, radial
≈m	0,25 kg	Weight

Dimensions

C	18 mm	Width, outer ring
S	9 mm	Distance raceway
d ₁	39,4 mm	Rib diameter inner ring
d ₂	37,3 mm	Rib diameter sealing inner ring
A	5,8 mm	Distance thread
W	3 mm	Width of flats

Calculation factors

f ₀	13,8	Calculation factor
----------------	------	--------------------



Characteristics

-  Radial load
-  Axial load in one direction
-  Axial load in two directions
-  Lifetime lubrication, freedom from maintenance
-  Grease Lubrication
-  Sealed on both sides
-  Static angular error and misalignment