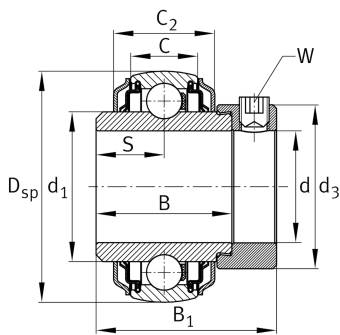


**E30-KRR-B-2C-L402/70**

Radial insert ball bearing

Radial insert ball bearing E...KRR-B-2C

Technical information

**Your current product variant**

Flinger shields	2C	Flinger shield on both sides
Lubricant	L402/70	L402/70

Main Dimensions & Performance Data

d	30 mm	Bore diameter
D _{SP}	62 mm	Outside diameter
B	36,5 mm	Width
C _{0r}	11.300 N	Basic static load rating, radial
C _{ur}	530 N	Fatigue load limit, radial
B ₁	48,5 mm	Locking collar total width
C _r	19.500 N	Basic dynamic load rating, radial
≈m	0,41 kg	Weight

Dimensions

C	18 mm	Width, outer ring
C ₂	27,2 mm	Sealing total width
S	18,3 mm	Distance raceway
d ₁	40,2 mm	Rib diameter inner ring
d ₃	44 mm	Outside diameter locking collar/locknut
W	4 mm	Width of flats








Temperature range

T_{min}	-20 °C	Operating temperature min.
T_{max}	100 °C	Operating temperature max.

Calculation factors

f_0	13,8	Calculation factor
-------	------	--------------------

Characteristics

-  Radial load
-  Axial load in one direction
-  Axial load in two directions
-  Lifetime lubrication, freedom from maintenance
-  Grease Lubrication
-  Sealed on both sides
-  Static angular error and misalignment