

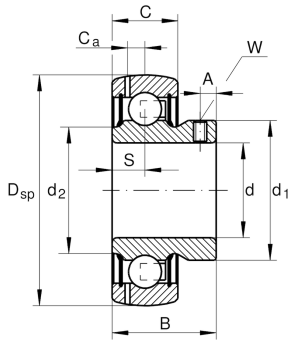
**GAY40-XL-NPP-B**

Radial insert ball bearing

Radial insert ball bearings GAY..-NPP-B,
spherical outer ring, location by grub screws,
P seals on both sides

X-life

Technical information

**Main Dimensions & Performance Data**

d	40 mm	Bore diameter
D _{SP}	80 mm	Outside diameter
B	39,45 mm	Width
C _{0r}	19.800 N	Basic static load rating, radial
C _{ur}	910 N	Fatigue load limit, radial
C _r	32.500 N	Basic dynamic load rating, radial
≈m	0,53 kg	Weight

Dimensions

C	21 mm	Width, outer ring
S	10,5 mm	Distance raceway
d ₁	52,4 mm	Rib diameter inner ring
d ₂	49,3 mm	Rib diameter sealing inner ring
C _a	6,4 mm	Distance to lubrication hole
A	8 mm	Distance thread
W	4 mm	Width of flats

Temperature range

T _{min}	-20 °C	Operating temperature min.
T _{max}	120 °C	Operating temperature max.



Calculation factors

f_0	13,6	Calculation factor
-------	------	--------------------

Characteristics

-  Radial load
-  Axial load in one direction
-  Axial load in two directions
-  Lifetime lubrication, freedom from maintenance
-  Grease Lubrication
-  Sealed on both sides
-  Static angular error and misalignment