

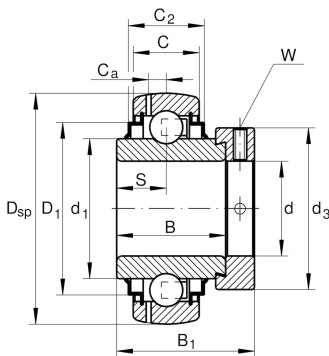
**GE50-XL-KRR-B-FA101**

Radial insert ball bearing

Radial insert ball bearing GE...-XL-KRR-B-FA101

X-life

Technical information



Your current product variant

Manufacturing instruction

FA101

High and low temperature design -40°C to +180°C

Main Dimensions & Performance Data

d	50 mm	Bore diameter
D _{SP}	90 mm	Outside diameter
B	49,2 mm	Width
C _{0r}	23.200 N	Basic static load rating, radial
C _{ur}	1.100 N	Fatigue load limit, radial
B ₁	62,8 mm	Locking collar total width
C _r	35.000 N	Basic dynamic load rating, radial
≈m	0,98 kg	Weight





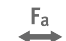



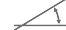
Dimensions

C	22 mm	Width, outer ring
C ₂	26,4 mm	Sealing total width
S	24,6 mm	Distance raceway
d ₁	62,8 mm	Rib diameter inner ring
D ₁	77,3 mm	Outside diameter seal
C _a	6,9 mm	Distance to lubrication hole
d ₃	69 mm	Outside diameter locking collar/locknut
W	5 mm	Width of flats

Calculation factors

f ₀	14,4	Calculation factor
----------------	------	--------------------

Characteristics

	Radial load
	Axial load in one direction
	Axial load in two directions
	Lifetime lubrication, freedom from maintenance
	Grease Lubrication
	Sealed on both sides
	Static angular error and misalignment