

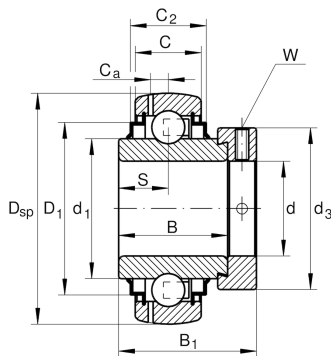
**GE90-XL-KRR-B-FA164**

Radial insert ball bearing

Radial insert ball bearings GE...KRR-B-FA164, spherical outer ring, location by eccentric locking collar, R seals on both sides, for temperatures up to +250°C

X-life

Technical information



Your current product variant

Manufacturing instruction	FA164	High temperature design up to +250°C
---------------------------	-------	--------------------------------------

Main Dimensions & Performance Data

d	90 mm	Bore diameter
D _{SP}	160 mm	Outside diameter
B	52 mm	Width
C _{0r}	79.000 N	Basic static load rating, radial
C _{ur}	3.650 N	Fatigue load limit, radial
B ₁	69,5 mm	Locking collar total width
C _r	109.000 N	Basic dynamic load rating, radial
≈m	3,68 kg	Weight



Dimensions

C	32 mm	Width, outer ring
C ₂	35 mm	Sealing total width
S	23 mm	Distance raceway
d ₁	109,4 mm	Rib diameter inner ring
D ₁	138 mm	Outside diameter seal
C _a	10 mm	Distance to lubrication hole
d ₃	118 mm	Outside diameter locking collar/locknut
W	6 mm	Width of flats

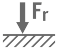





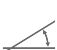
Temperature range

T _{min}	150 °C	Operating temperature min.
T _{max}	250 °C	Operating temperature max.

Calculation factors

f ₀	14,5	Calculation factor
----------------	------	--------------------

Characteristics

	Radial load
	Axial load in one direction
	Axial load in two directions
	Lifetime lubrication, freedom from maintenance
	Grease Lubrication
	Sealed on both sides
	Static angular error and misalignment