

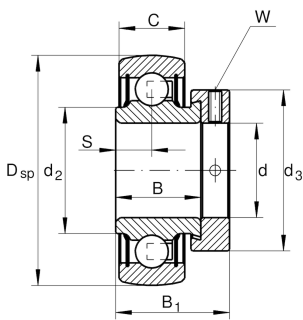
**RAE20-XL-NPP-B**

Radial insert ball bearing

Radial insert ball bearing RAE...XL-NPP-B

X-life

## Technical information

**Main Dimensions & Performance Data**

d	20 mm	Bore diameter
D <sub>SP</sub>	47 mm	Outside diameter
B	21,4 mm	Width
C <sub>0r</sub>	6.600 N	Basic static load rating, radial
C <sub>ur</sub>	345 N	Fatigue load limit, radial
B <sub>1</sub>	31 mm	Locking collar total width
C <sub>r</sub>	12.800 N	Basic dynamic load rating, radial
≈m	0,16 kg	Weight

**Dimensions**

C	14 mm	Width, outer ring
S	7,5 mm	Distance raceway
d <sub>2</sub>	26,9 mm	Rib diameter sealing inner ring
d <sub>3</sub>	33 mm	Outside diameter locking collar/locknut
W	3 mm	Width of flats

**Calculation factors**

f <sub>0</sub>	13,1	Calculation factor
----------------	------	--------------------



### Characteristics

---



Radial load



Axial load in one direction



Axial load in two directions



Lifetime lubrication, freedom from maintenance



Grease Lubrication



Sealed on both sides



Static angular error and misalignment