

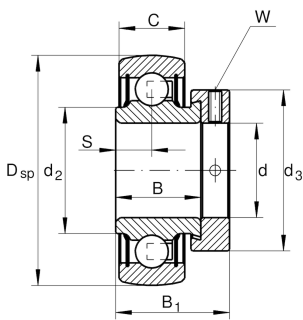
**RAE20-XL-NPP-B-FA106**

Radial insert ball bearing

Radial insert ball bearing RAE...XL-NPP-B

X-life

Technical information

**Main Dimensions & Performance Data**

| | | |
|-----------------|----------|-----------------------------------|
| d | 20 mm | Bore diameter |
| D _{SP} | 47 mm | Outside diameter |
| B | 21,4 mm | Width |
| C _{0r} | 6.600 N | Basic static load rating, radial |
| C _{ur} | 315 N | Fatigue load limit, radial |
| B ₁ | 31 mm | Locking collar total width |
| C _r | 12.800 N | Basic dynamic load rating, radial |
| ≈m | 0,16 kg | Weight |

Dimensions

| | | |
|----------------|---------|---|
| C | 14 mm | Width, outer ring |
| S | 7,5 mm | Distance raceway |
| d ₂ | 26,9 mm | Rib diameter sealing inner ring |
| d ₃ | 33 mm | Outside diameter locking collar/locknut |
| W | 3 mm | Width of flats |

Calculation factors

| | | |
|----------------|------|--------------------|
| f ₀ | 13,1 | Calculation factor |
|----------------|------|--------------------|



Characteristics

-  Radial load
-  Axial load in one direction
-  Axial load in two directions
-  Lifetime lubrication, freedom from maintenance
-  Grease Lubrication
-  Sealed on both sides
-  Static angular error and misalignment