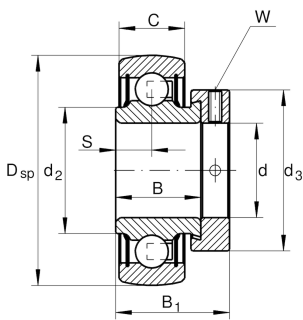
**RAE25-XL-NPP-B-FA106**

Radial insert ball bearing

Radial insert ball bearing RAE...XL-NPP-B

X-life

Technical information

**Main Dimensions & Performance Data**

d	25 mm	Bore diameter
D _{SP}	52 mm	Outside diameter
B	21,4 mm	Width
C _{0r}	7.800 N	Basic static load rating, radial
C _{ur}	370 N	Fatigue load limit, radial
B ₁	31 mm	Locking collar total width
C _r	14.000 N	Basic dynamic load rating, radial
≈m	0,19 kg	Weight

Dimensions

C	15 mm	Width, outer ring
S	7,5 mm	Distance raceway
d ₂	30,5 mm	Rib diameter sealing inner ring
d ₃	37,5 mm	Outside diameter locking collar/locknut
W	3 mm	Width of flats

Calculation factors

f ₀	13,8	Calculation factor
----------------	------	--------------------



Characteristics

-  Radial load
-  Axial load in one direction
-  Axial load in two directions
-  Lifetime lubrication, freedom from maintenance
-  Grease Lubrication
-  Sealed on both sides
-  Static angular error and misalignment