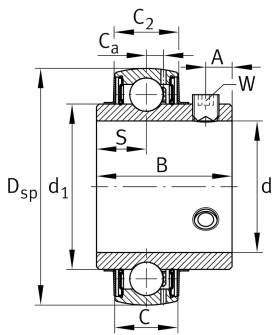


**FAG****UC207-20**

Radial insert ball bearing

Radial insert ball bearings UC, spherical outer ring, location by grub screws, RSR seals on both sides

Technical information

**Main Dimensions & Performance Data**

d	31,75 mm	Bore diameter
d	31,75 mm	Bore diameter, inch
D _{SP}	72 mm	Outside diameter
B	42,9 mm	Width
C _{0r}	15.300 N	Basic static load rating, radial
C _{ur}	650 N	Fatigue load limit, radial
C _r	27.500 N	Basic dynamic load rating, radial
≈m	0,503 kg	Weight

Dimensions

C	20 mm	Width, outer ring
C ₂	20,6 mm	Sealing total width
S	17,5 mm	Distance raceway
d ₁	46,84 mm	Rib diameter inner ring
C _a	5,7 mm	Distance to lubrication hole
A	7 mm	Distance thread

Temperature range

T _{min}	-20 °C	Operating temperature min.
T _{max}	100 °C	Operating temperature max.



Calculation factors

f_0	13,8	Calculation factor
-------	------	--------------------

Characteristics

-  Radial load
-  Axial load in one direction
-  Axial load in two directions
-  Lifetime lubrication, freedom from maintenance
-  Grease Lubrication
-  Sealed on both sides
-  Static angular error and misalignment