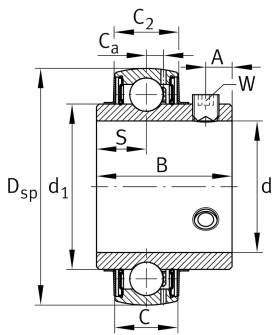


**FAG****UC214**

## Radial insert ball bearing

Radial insert ball bearings UC, spherical outer ring, location by grub screws, RSR seals on both sides

## Technical information

**Main Dimensions & Performance Data**

d	70 mm	Bore diameter
D <sub>SP</sub>	125 mm	Outside diameter
B	74,6 mm	Width
C <sub>0r</sub>	44.000 N	Basic static load rating, radial
C <sub>ur</sub>	2.300 N	Fatigue load limit, radial
C <sub>r</sub>	66.000 N	Basic dynamic load rating, radial
≈m	1,96 kg	Weight

**Dimensions**

C	30 mm	Width, outer ring
C <sub>2</sub>	31,4 mm	Sealing total width
S	30,2 mm	Distance raceway
d <sub>1</sub>	85,2 mm	Rib diameter inner ring
C <sub>a</sub>	8,5 mm	Distance to lubrication hole
A	12 mm	Distance thread
W	6 mm	Width of flats

**Temperature range**

T <sub>min</sub>	-20 °C	Operating temperature min.
T <sub>max</sub>	100 °C	Operating temperature max.



### Calculation factors

---

$f_0$	14,4	Calculation factor
-------	------	--------------------

### Characteristics

---

-  Radial load
-  Axial load in one direction
-  Axial load in two directions
-  Lifetime lubrication, freedom from maintenance
-  Grease Lubrication
-  Sealed on both sides
-  Static angular error and misalignment