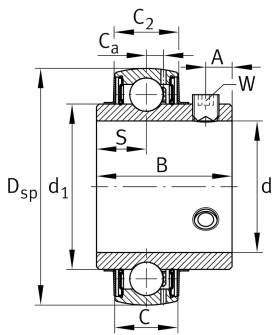


**FAG****UC217-55**

Radial insert ball bearing

Radial insert ball bearings UC, spherical outer ring, location by grub screws, RSR seals on both sides

Technical information

**Main Dimensions & Performance Data**

d	87,313 mm	Bore diameter
d	87,313 mm	Bore diameter, inch
D _{SP}	150 mm	Outside diameter
B	85,7 mm	Width
C _{0r}	64.000 N	Basic static load rating, radial
C _{ur}	3.050 N	Fatigue load limit, radial
C _r	88.000 N	Basic dynamic load rating, radial
≈m	3,2 kg	Weight

Dimensions

C	35 mm	Width, outer ring
C ₂	36,4 mm	Sealing total width
S	34,1 mm	Distance raceway
d ₁	104,09 mm	Rib diameter inner ring
C _a	10 mm	Distance to lubrication hole
A	14 mm	Distance thread

Temperature range

T _{min}	-20 °C	Operating temperature min.
T _{max}	100 °C	Operating temperature max.



Calculation factors

f_0	14,8	Calculation factor
-------	------	--------------------

Characteristics

-  Radial load
-  Axial load in one direction
-  Axial load in two directions
-  Lifetime lubrication, freedom from maintenance
-  Grease Lubrication
-  Sealed on both sides
-  Static angular error and misalignment