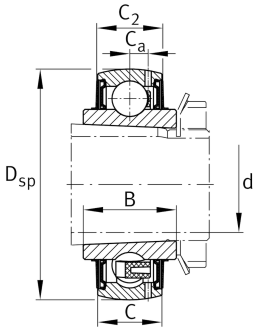
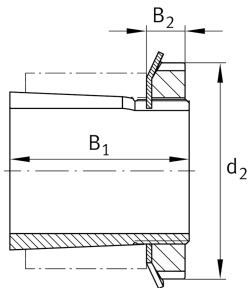


**FAG****UK206**

Radial insert ball bearing

Radial insert ball bearings UK, spherical outer ring, location by adapter sleeve, RSR seals on both sides

Technical information

**Main Dimensions & Performance Data**

D_{SP}	62 mm	Outside diameter
B	26 mm	Width
C_{0r}	11.300 N	Basic static load rating, radial
C_{ur}	590 N	Fatigue load limit, radial
C_r	20.700 N	Basic dynamic load rating, radial
$\approx m$	0,37 kg	Weight

Dimensions

C	19 mm	Width, outer ring
C_2	19,6 mm	Sealing total width
C_a	5 mm	Distance to lubrication hole
d_3	45 mm	Outside diameter locking collar/locknut
B_2	8 mm	Width nut and lock

Temperature range

T_{min}	-20 °C	Operating temperature min.
T_{max}	120 °C	Operating temperature max.

Calculation factors

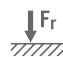
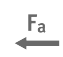
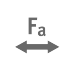




f_0	13,8	Calculation factor
-------	------	--------------------



Additional information

H2306-J30QH	Adapter sleeve
KM6	Locknut
MB6	Fuse
H.H2306	Sleeve

Characteristics

-  Radial load
-  Axial load in one direction
-  Axial load in two directions
-  Lifetime lubrication, freedom from maintenance
-  Grease Lubrication
-  Sealed on both sides
-  Static angular error and misalignment