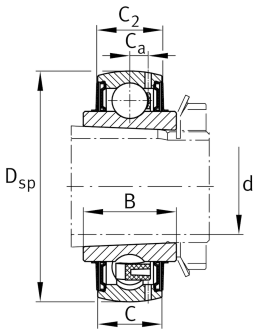
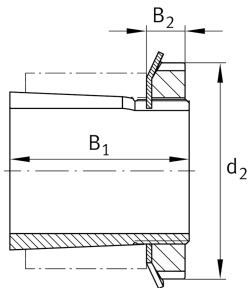


**FAG****UK215**

## Radial insert ball bearing

Radial insert ball bearings UK, spherical outer ring, location by adapter sleeve, RSR seals on both sides

## Technical information

**Main Dimensions & Performance Data**

$D_{SP}$	130 mm	Outside diameter
B	44,5 mm	Width
$C_{0r}$	44.500 N	Basic static load rating, radial
$C_{ur}$	2.300 N	Fatigue load limit, radial
$C_r$	66.000 N	Basic dynamic load rating, radial
$\approx m$	2,62 kg	Weight

**Dimensions**

C	32 mm	Width, outer ring
$C_2$	33,4 mm	Sealing total width
$C_a$	8,5 mm	Distance to lubrication hole
$d_3$	98 mm	Outside diameter locking collar/locknut
$B_2$	15 mm	Width nut and lock

**Temperature range**

$T_{min}$	-20 °C	Operating temperature min.
$T_{max}$	120 °C	Operating temperature max.

**Calculation factors**




$f_0$	14,6	Calculation factor
-------	------	--------------------



### Additional information

H2315-J30QH	Adapter sleeve
KM15	Locknut
MB15	Fuse
H.H2315	Sleeve

### Characteristics

-  Radial load
-  Axial load in one direction
-  Axial load in two directions
-  Lifetime lubrication, freedom from maintenance
-  Grease Lubrication
-  Sealed on both sides
-  Static angular error and misalignment