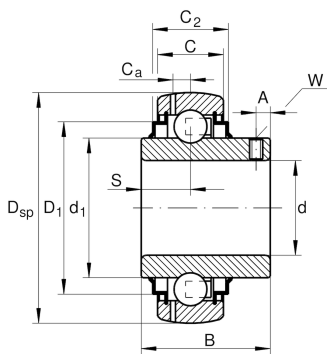


IMAGE  
COMING SOON**GYE30-XL-KLL-B-FA125.5-L091** [↗](#)

Radial insert ball bearing

Radial insert ball bearing GYE...KLL-B

## Technical information



## Your current product variant

Lubricant	L091	Grease (L091)
-----------	------	---------------

## Main Dimensions &amp; Performance Data

d	30 mm	Bore diameter
D <sub>SP</sub>	62 mm	Outside diameter
B	38,1 mm	Width
C <sub>0r</sub>	11.300 N	Basic static load rating, radial
C <sub>r</sub>	19.500 N	Basic dynamic load rating, radial
≈m	0,3 kg	Weight

## Dimensions

C	18 mm	Width, outer ring
S	15,9 mm	Distance raceway
d <sub>1</sub>	40,2 mm	Rib diameter inner ring
C <sub>a</sub>	4,7 mm	Distance to lubrication hole
A	5,8 mm	Distance thread
W	3 mm	Width of flats