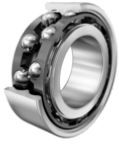


**FAG****30/8-B-TVH**

Angular contact ball bearing

Angular contact ball bearing 30..-B-TVH,
double row, plastic cage

Technical information

**Your current product variant**

Design variant	B	Bearing without filling slot
Type of Seal	Without	Not sealed
Cage	TVH	Solid cage made of glass-fiber reinforced polyamide PA66
Tolerance class	PN	Normal (PN)
Dimensional / heat stabilization	SN	Rings dimensional stabilized up to 120°
Lubricant	Without	Bearing not greased
Axial internal clearance	CN	Group N (CN)

Main Dimensions & Performance Data

d	8 mm	Bore diameter
D	22 mm	Outside diameter
B	11 mm	Width
C_r	5.100 N	Basic dynamic load rating, radial
C_{0r}	2.600 N	Basic static load rating, radial
C_{ur}	140 N	Fatigue load limit, radial
n_G	34.500 1/min	Limiting speed
n_{gr}	26.000 1/min	Reference speed
$\approx m$	0,021 kg	Weight



Mounting dimensions

$d_{a \min}$	10 mm	Minimum diameter shaft shoulder
$D_{a \max}$	20 mm	Maximum diameter of housing shoulder
$r_{a \max}$	0,3 mm	Maximum fillet radius







Dimensions

r_{\min}	0,3 mm	Minimum chamfer dimension
D_1	17,55 mm	Shoulder diameter outer ring
D_2	19,03 mm	Caliber diameter outer ring
d_1	12,6 mm	Shoulder diameter inner ring
d_2	10,5 mm	Caliber diameter inner ring
a	11,2 mm	Distance between the apexes of the pressure cones
α	25 °	Contact angle

Temperature range

T_{\min}	-30 °C	Operating temperature min.
T_{\max}	120 °C	Operating temperature max.

Characteristics

	Radial load
	Axial load in one direction
	Axial load in two directions
	Grease Lubrication
	Oil Lubrication
	Not sealed