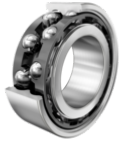
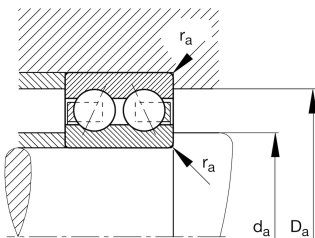
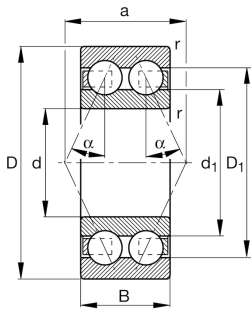


**FAG****3302-BD-XL-TVH**

Angular contact ball bearing

Angular contact ball bearing 33..-BD-XL-TVH,
double row, X-life, plastic cage**X-life**

Technical information



Your current product variant

Design variant	B	Bearing without filling slot
Changed internal design	D	D
Sealing	Without	Not sealed
Cage	TVH	Solid cage made of glass-fiber reinforced polyamide PA66
Tolerance class	P6	Class 6 (ISO 492:2023)
Dimensional / heat stabilization	SN	Rings dimensional stabilized up to 120°
Lubricant	Without	Bearing not greased
Axial internal clearance	CN	Group N (CN)

Main Dimensions & Performance Data

d	15 mm	Bore diameter
D	42 mm	Outside diameter
B	19 mm	Width
C _r	17.000 N	Basic dynamic load rating, radial
C _{0r}	10.400 N	Basic static load rating, radial
C _{ur}	720 N	Fatigue load limit, radial
n _G	18.400 1/min	Limiting speed
n _{gr}	12.100 1/min	Reference speed
m	0,118 kg	Weight



Mounting dimensions

$d_{a \min}$	20,6 mm	Minimum diameter shaft shoulder
$D_{a \max}$	36,4 mm	Maximum diameter of housing shoulder
$r_{a \max}$	1 mm	Maximum fillet radius

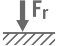
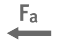




Dimensions

r_{\min}	1 mm	Minimum chamfer dimension
D_1	35,74 mm	Shoulder diameter outer ring
D_2	37,89 mm	Caliber diameter outer ring
d_1	27,15 mm	Shoulder diameter inner ring
d_2	25,78 mm	Caliber diameter inner ring
a	24,8 mm	Distance between the apexes of the pressure cones
α	30 °	Contact angle

Temperature range

T_{\min}	-30 °C	Operating temperature min.
T_{\max}	120 °C	Operating temperature max.

Characteristics

	Radial load
	Axial load in one direction
	Axial load in two directions
	Grease Lubrication
	Oil Lubrication
	Not sealed