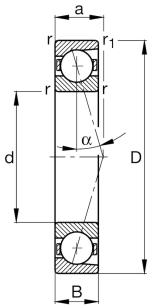
**FAG****B71917-C-T-P4S-UL**

Spindle bearing

Spindle bearing B719...-C, adjusted, in pairs or sets, contact angle $\alpha = 15^\circ$, restricted tolerances

Technical information

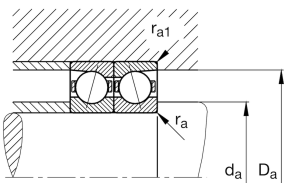
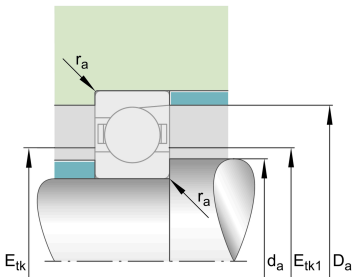


Your current product variant

Preload class	L	Preload light
Contact angle	C	Contact angle 15°
Tolerance class	P4S	Tolerance class P4S, FAG standard better than P4 to ISO 492:2023
Sealing	Without	Not sealed
Cage	T	Laminated fabric cage
Arrangement bearing set	U	Single bearing

Main Dimensions & Performance Data

d	85 mm	Bore diameter
D	120 mm	Outside diameter
B	18 mm	Width
C_r	47.000 N	Basic dynamic load rating, radial
C_{0r}	33.500 N	Basic static load rating, radial
C_{ur}	3.500 N	Fatigue load limit, radial
n_G Grease	11.000 1/min	Limiting speed for grease lubrication
n_G Oil	17.000 1/min	Limiting speed for oil lubrication
$\approx m$	0,544 kg	Weight





Mounting dimensions

d_a	92 mm	Diameter shaft shoulder
d_a	h12	Diameter shaft shoulder clearance
D_a	114 mm	Shoulder diameter outer ring
D_a	H12	Shoulder diameter outer ring clearance
$r_{a \max}$	0,6 mm	Maximum recess radius
$r_{a1 \max}$	0,6 mm	Maximum recess radius
$E_{tk \min}$	95,9 mm	Minimum diameter injection pitch
$E_{tk \max}$	99,3 mm	Maximum diameter injection pitch
$E_{tk1 \min}$	95,9 mm	Minimum diameter injection pitch
$E_{tk1 \max}$	99,3 mm	Maximum diameter injection pitch
a	22,7 mm	Distance between the apexes of the pressure cones

Dimensions

r_{\min}	1,1 mm	Minimum chamfer dimension
$r_{1 \min}$	1,1 mm	Minimum chamfer dimension
α	15 °	Contact angle

Temperature range


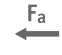


T_{\min}	-30 °C	Operating temperature min.
T_{\max}	100 °C	Operating temperature max.



Additional information

F_{VL}	237 N	Preload force light
F_{VM}	788 N	Preload force medium
F_{VH}	1.597 N	Preload force heavy
K_{aEL}	726 N	Lift-off force light
K_{aEM}	2.609 N	Lift-off force medium
K_{aEH}	5.644 N	Lift-off force heavy
c_{aL}	80 N/ μ m	Axial rigidity light
c_{aM}	136 N/ μ m	Axial rigidity medium
c_{aH}	195 N/ μ m	Axial rigidity heavy

Characteristics

-  Radial load
-  Axial load in one direction
-  Grease Lubrication
-  Oil Lubrication
-  Not sealed